


## SAFETY INSTRUCTIONS

- Read the instructions carefully before using your appliance for the first time and keep them: Any use that does not comply with the instructions will release the manufacturer from any liability.
  - This appliance should not be used by children.
-  **Never point the laser in the direction of the eyes!**
- This device is not waterproof, and the manufacturer declines all responsibility for use in a humid environment.



## CAUTION

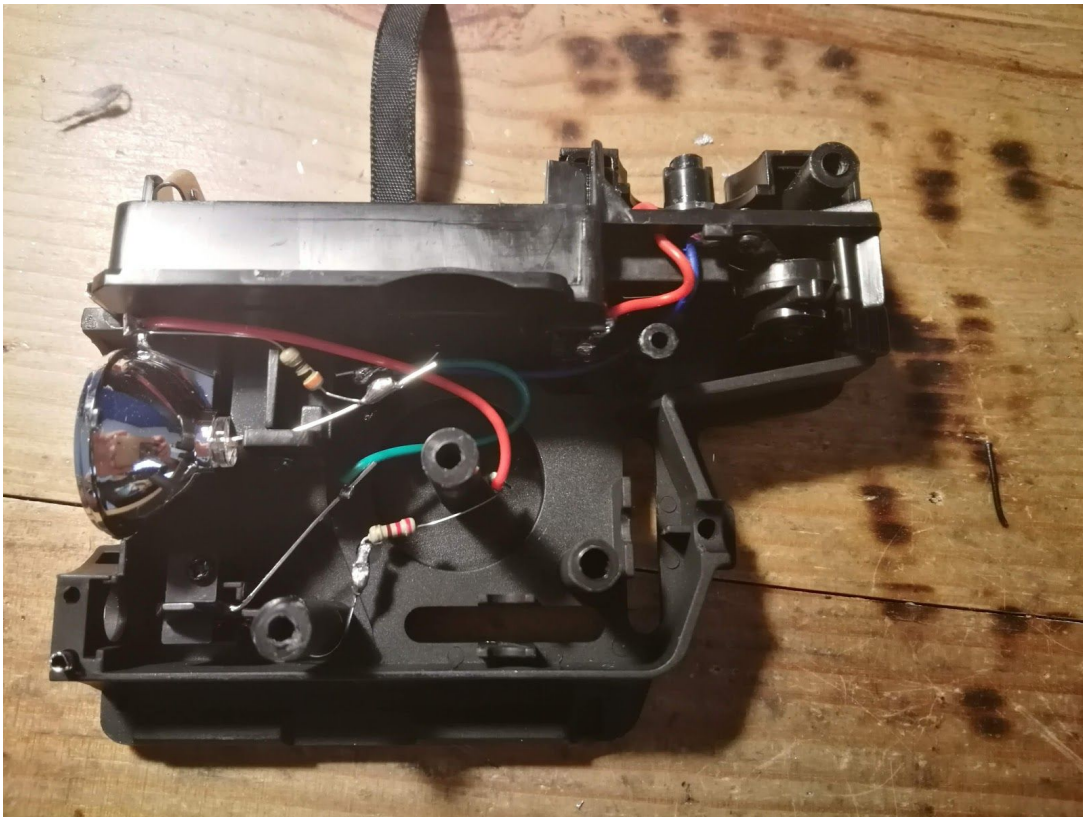
- Before use, recharge your batteries.

## THE REQUIRED TOOLS

- Soldering iron + Tin
- Flat and Phillips screwdriver
- Drill + Ø 6.5mm (1/4in) + Ø 8mm (5/16in) drill bits
  - Saw
  - Glue gun
  - Liquid glue

# DISASSEMBLY

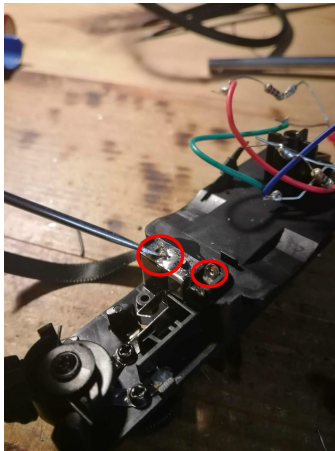
1. Remove the 3 screws, remove the battery cover and unscrew the optic from the lamp reflector.
2. Separate the LAM into 2, you will see that there is actually a 3rd part, central.
3. Remove the 2 original LEDs and unsolder all the cables.



Original

NOTICE  
KIT LAM Mk23

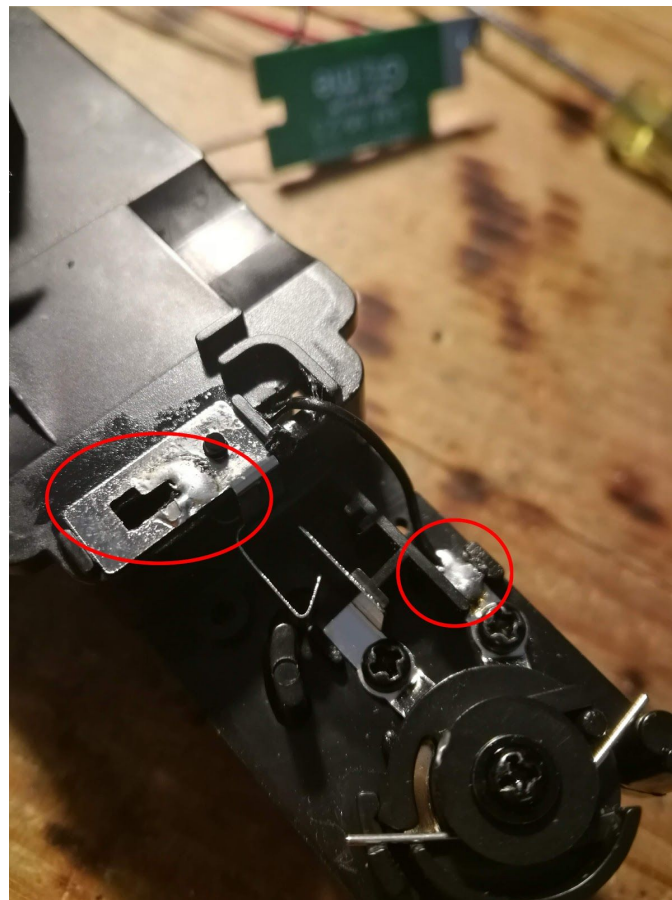
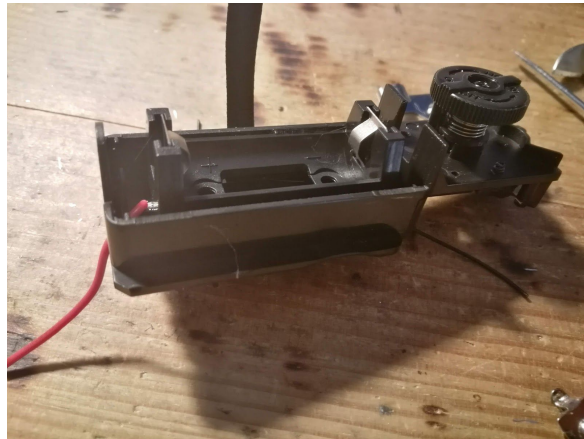
4. In the battery compartment, use the flat screwdriver to remove the metal tabs and springs.



# INTEGRATION OF THE NEW SYSTEM

## 1 - CR123A Alimentation

Place and glue the CR123A battery holder in the battery compartment: The red wire towards the barrel and the black wire towards the handle. Pass the black cable through the hole provided for this purpose and solder it to the original ON / OFF switch. Then the metal plate on the left of the 3rd photo.





NOTICE  
KIT LAM Mk23

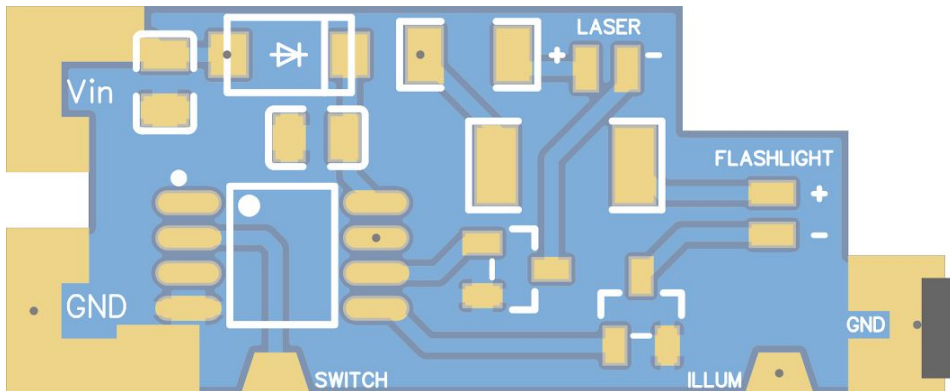
Once the battery holder is in place, you will notice that the hood no longer closes due to the 4 tabs located inside it. Cutting them will allow you to close the cover without any problem.



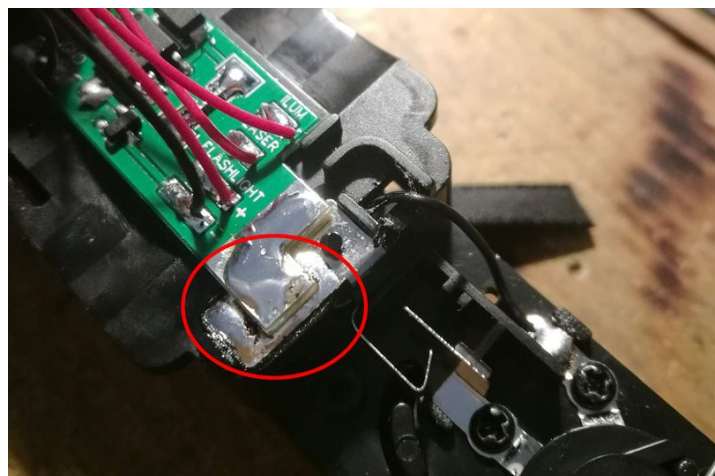
***Please note that the electronics are designed for a CR123A RECHARGEABLE battery : a non-rechargeable battery may cause malfunctions.***

## 2 - Circuit Setup

Place and solder the circuit on the existing metal plate.

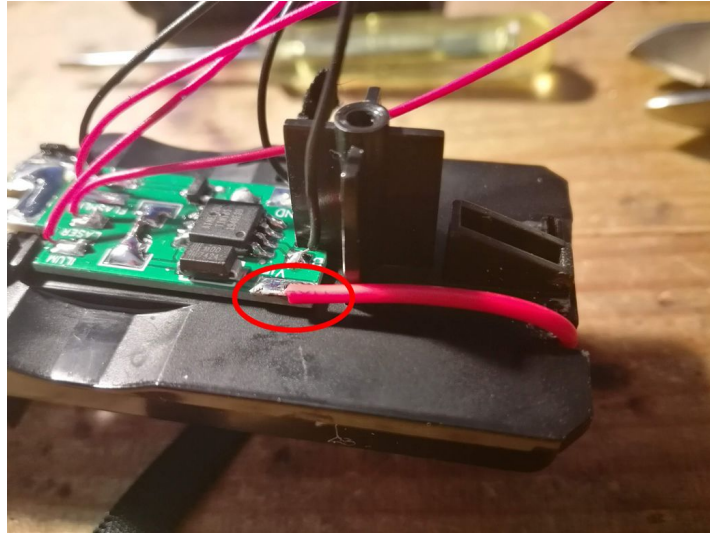


Once the circuit is in place, solder it on the existing contact



NOTICE  
KIT LAM Mk23

Then solder the red wire of the new battery holder



### 3 - Drilling and integration of the mode selection button

The idea here is to enlarge the hole of the central screw, drill with a Ø6.5mm (1/4in) drill bit.



Place a dab of glue and slide the button to the desired position (Please note that pushing it out could catch it and therefore damage the system).

NOTICE  
KIT LAM Mk23



Finally, using a saw (or cutters if not), shorten the central column in which the screw was biting.



#### 4 - Drilling LED and Laser holes

The idea here is to enlarge the 2 holes in which we will later insert the color LED and the laser, enlarge the holes with a Ø8mm (5/16in) drill bit.

#### 5 - Integration of the lens - LED pair

You have in your kit a new lens and a new LED. The new lens is to be glued on the original lens: BE CAREFUL not to load in glue, the more glue you put between the lens and the LED, the more you will reduce the light intensity.



**A few dots of glue on the outside is more than enough!**



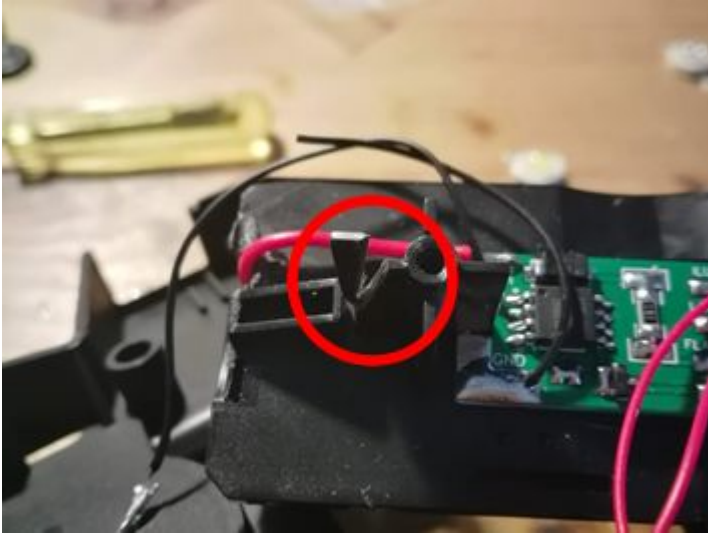
Once the lens is in place, slightly enlarge the original hole and glue the LED in this way. Remember to locate the plus and minus of the LED (noted on the legs).



Once the different elements have been glued, you can integrate them into the LAM.  
To do this, you will first have to increase the clearance by cutting a small plastic part which will allow you a perfect integration thereafter.

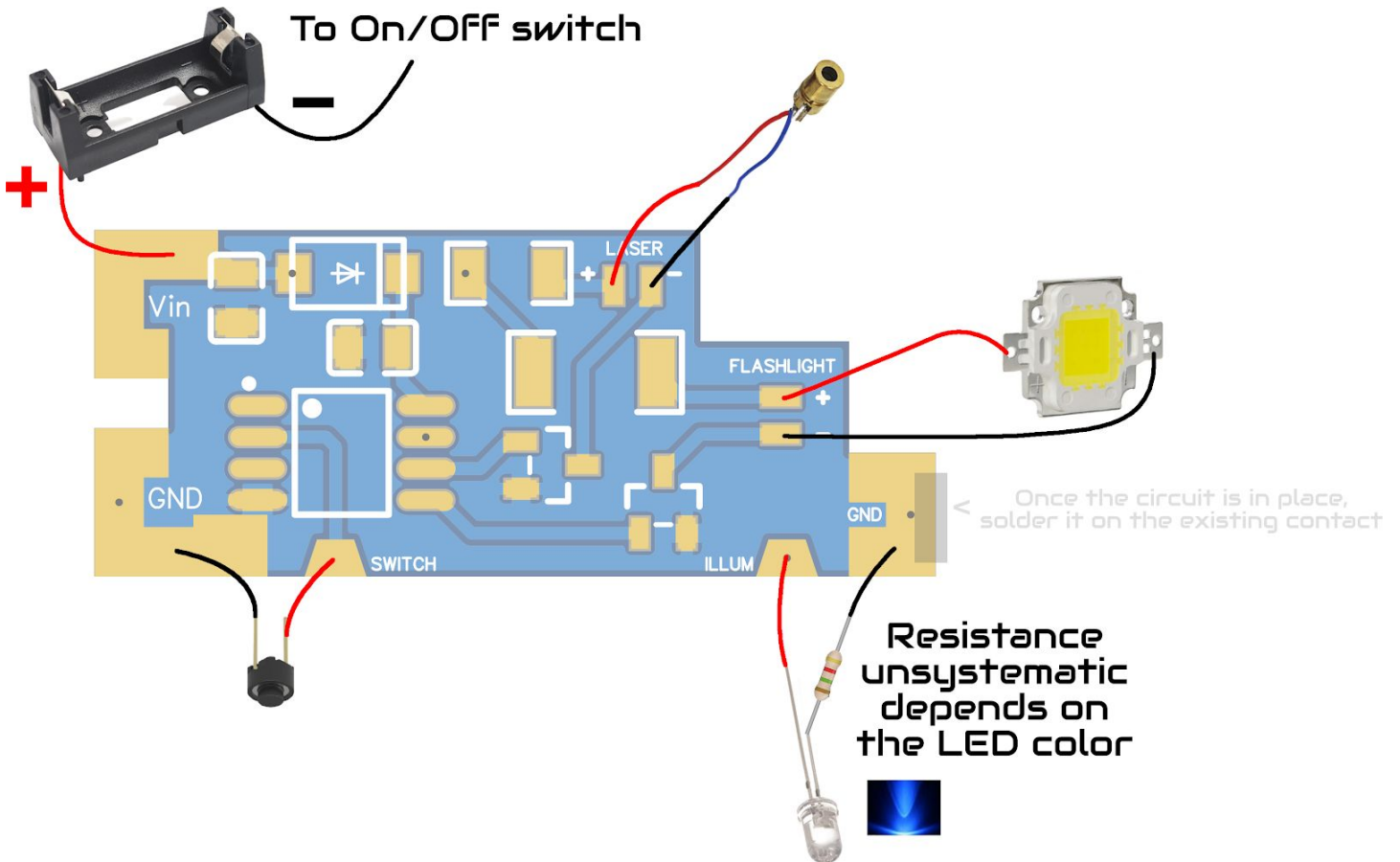



NOTICE  
KIT LAM Mk23



## 6 - Soldering of the various elements and installation

Solder the elements according to the following wiring diagram:



 **Never point the laser in the direction of the eyes!**

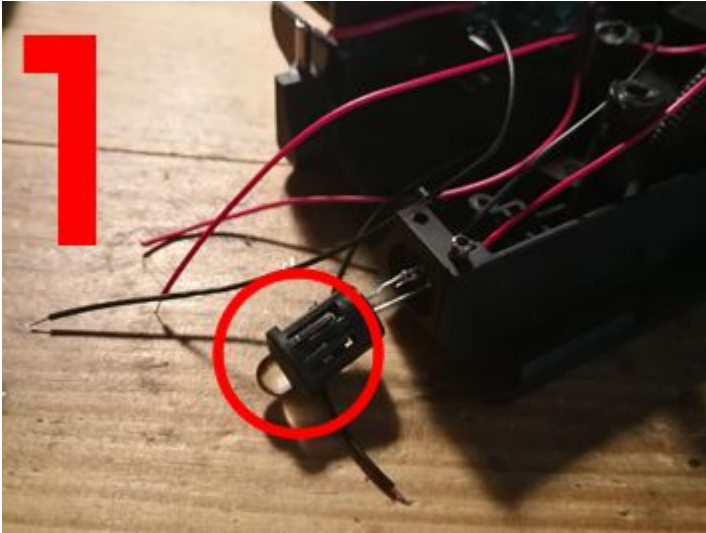
Before installing the various elements, test that they are functioning correctly:

- 1 - Activate and block the rear switch in order to power up the card.
- 2 - Pressing the new button changes mode.
- 3 - There is no OFF position with the new button, if by pressing it you find a configuration where all the elements are off, you have missed a weld.

 **Never point the laser in the direction of the eyes!**

## **LED INTEGRATION**

1. Once the correct operation is confirmed, then place the colored led and the laser in a holder and insert them into the holes provided for this purpose.
2. Ensure the bulb is in place



**CAUTION: Be careful not to put the 2 legs of the LED in contact when switching on, separate them well (see photo above)**

3. Then glue with the gun



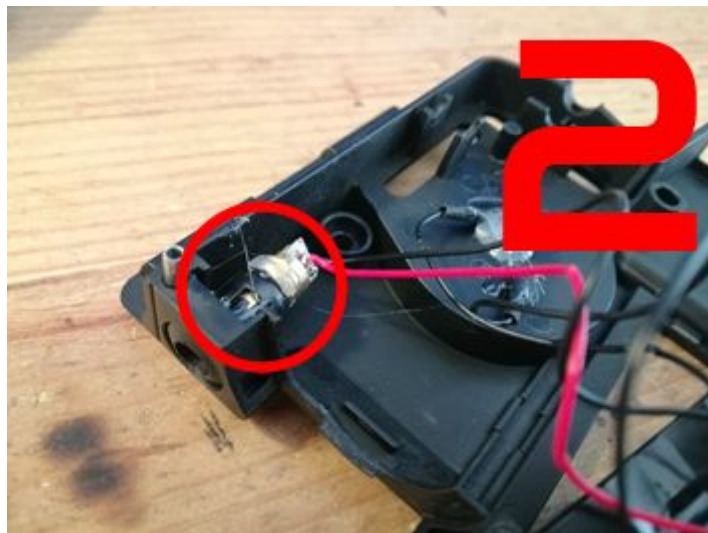
**TIP FOR IR LED :** You can check the IR light by using a cellphone camera, all you have to do is see if the light has a violet color to it when the camera is pointed directly at it.

## **LASER INTEGRATION**

CAUTION: The laser has a lens allowing the light beam to be more or less concentrated. By integrating the laser into the holder, you are likely to disturb this concentration. We therefore recommend that you first adjust the concentration, lightly glue the lens ring and then insert the laser into the holder.



Adjustment and gluing of the laser lens

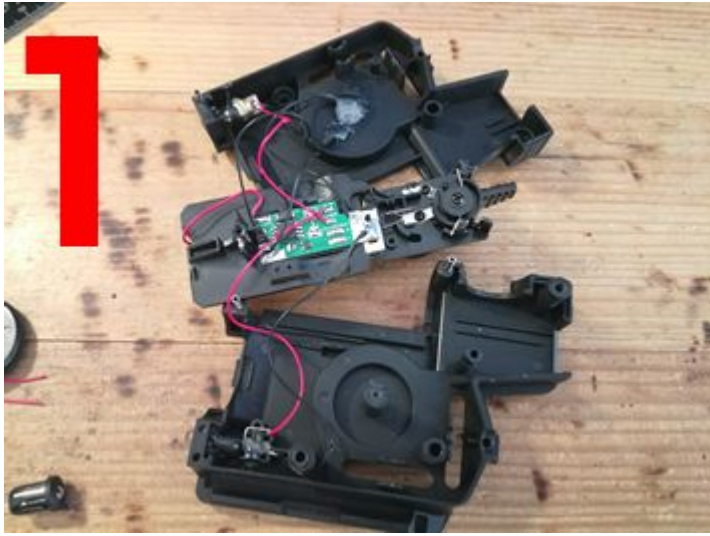


Setting up

Once the elements are ALIGNED, secure them using the glue gun



If you haven't already done so, you can solder the different elements and put the lamp in place before reassembling



## REASSEMBLY

Once the elements are fixed, you can reassemble the 2 shells.

Be careful not to pinch the cables during reassembly, as this would cut them.

Congratulations, your kit is assembled!

Any difficulty during the mounting?

Contact us: [Contact@MyAirsoftGame.com](mailto:Contact@MyAirsoftGame.com)

Fred : +33 (0)7 81 21 78 45